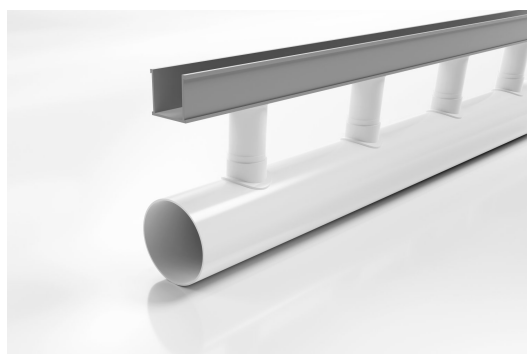




# 38G90

## Special Assembly



**The Special Assembly range was developed for outdoor applications with high capacity drainage needs.**

The 38G90 provides flexibility in landscape and pool design featuring a 38mm wide top drainage channel connected via downpipes at 200mm intervals to a 90mm drain pipe below.

38mm wide channel and 90mm drain pipe assembly Length: 3000mm

**Please note stainless steel grates to complement this system are separate items**

**Code 38G90**

## Range Special Assembly

## Category Modular Kits

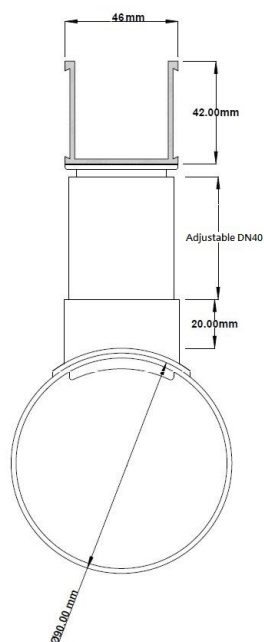
**Channel Material** uPVC

## SPECIFICATIONS + DIMENSIONS

<b>Channel Width</b>	46mm
<b>Channel Depth</b>	42mm
<b>Length(s)</b>	3000mm
<b>Outlet Size</b>	N/A

## PRODUCT APPLICATIONS

Balcony Drainage  
Commercial Drainage  
Courtyard / Patio Drainage  
Driveway Drainage  
Pool and Spa Area Drainage



Grates longer than 1500mm supplied in sections. Tile Inserts longer than 1200mm supplied in sections. Channels over 3000mm supplied in sections with joiner. +/-2mm tolerance on dimensions.



Copyright © Stormtech Pty Ltd. Patent 733361. Drawings not to scale, please use dimensions shown.  
Downloaded 13/07/2025 (please check for updates)

Visit **stormtech.com.au**  
for tools + inspiration.

Phone **1300 653 403**

Email **info@stormtech.com.au**