

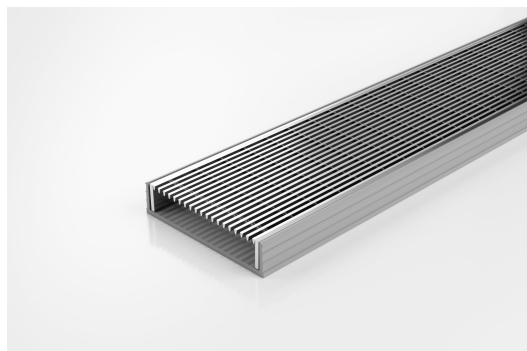


ARCHITECTURAL  
GRATES + DRAINS



# 100ARG20

## Linear Drain



**Code** 100ARG20

**Range** 100

**Grate Style** AR

**Category** Modular Kits

**Channel Material** uPVC

**Steel Grade** 316



Grates longer than 1500mm supplied in sections. Tile Inserts longer than 1200mm supplied in sections. Channels over 3000mm supplied in sections with joiner. +/-2mm tolerance on dimensions.

**100mm wide Architectural Stainless Steel grate with UPVC channel.**

The 100AR is the original premium architectural grate featuring a 2mm wire/2.5mm gap.

Modular site finish system, wedge wire grate, manufactured from 316 grade stainless steel combined with a UPVC channel.

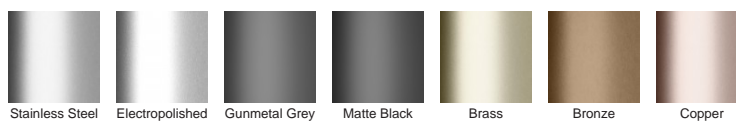
Kits longer than 3000mm are available on request.

Please be aware that depending on the installation environment, for a pool installation or close to a surf beach, you may need to have your stainless steel grates electropolished.

### SPECIFICATIONS + DIMENSIONS

<b>Channel Width</b>	106mm			
<b>Channel Depth</b>	23mm			
<b>Length(s)</b>	900mm	1000mm	1200mm	1500mm
	1800mm	1900mm	2000mm	2100mm
	2200mm	2400mm	2500mm	2700mm
	3000mm			
	DN40, DN50, DN80, DN100			

### STORMTECH COLOUR FINISHES



Electroplate finishes subject to natural variation with time and local environment. Factors such as pools/surf beaches may require electropolishing. Contact us for suitability.

### PRODUCT APPLICATIONS

Bathroom Drainage  
Aged / Health Care Drainage  
Balcony Drainage  
Commercial Drainage  
Courtyard / Patio Drainage  
Pool and Spa Area Drainage

Hospitality Drainage  
Paved Area Drainage  
Shower Drainage  
Multi-Residential Drainage  
Special Needs Drainage  
Threshold Drainage



Copyright © Stormtech Pty Ltd. Patent 733361. Drawings not to scale, please use dimensions shown.  
Downloaded 12/07/2025 (please check for updates)

Visit **stormtech.com.au**  
for tools + inspiration.

Phone **1300 653 403**

Email **info@stormtech.com.au**