

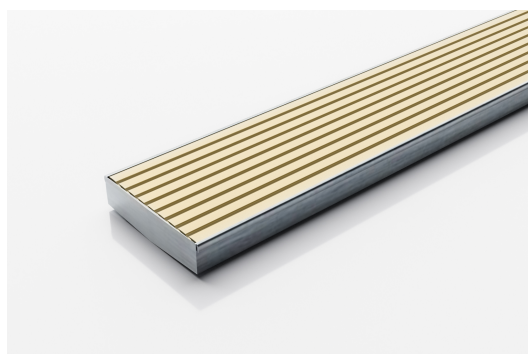


ARCHITECTURAL
GRATES + DRAINS



100AAiCO20-BG

Linear Drain



The 100AAiCO20-BG drainage unit features our Anodised Aluminium Wave grate design in Beach Gold paired with a Stainless Steel channel.

Complete finished unit, ready to install with all Aluminium Grate and 316 marine grade Stainless Steel channel and centre outlet.

Code 100AAiCO20-BG

Range 100

Grate Style AA

Category Fixed-Length Units

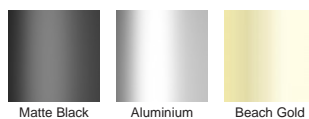
Channel Material Stainless Steel

Steel Grade 316

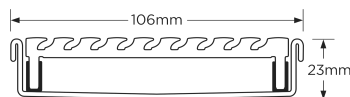
SPECIFICATIONS + DIMENSIONS

Channel Width	106mm
Channel Depth	23mm
Length(s)	900mm 1000mm 1200mm 1500mm
Outlet Size	DN80

STORMTECH COLOUR FINISHES



Electroplate finishes subject to natural variation with time and local environment. Factors such as pools/surf beaches may require electropolishing. Contact us for suitability.



Grates longer than 1500mm supplied in sections. Tile Inserts longer than 1200mm supplied in sections. Channels over 3000mm supplied in sections with joiner. +/-2mm tolerance on dimensions.

PRODUCT APPLICATIONS

- Bathroom Drainage
- Hospitality Drainage
- Aged / Health Care Drainage
- Paved Area Drainage
- Balcony Drainage
- Shower Drainage
- Commercial Drainage
- Multi-Residential Drainage
- Courtyard / Patio Drainage
- Special Needs Drainage
- Pool and Spa Area Drainage
- Threshold Drainage

Copyright © Stormtech Pty Ltd. Patent 733361. Drawings not to scale, please use dimensions shown. Downloaded 15/04/2026 (please check for updates)



Visit stormtech.com.au
for tools + inspiration.

Phone **1300 653 403**

Email info@stormtech.com.au