

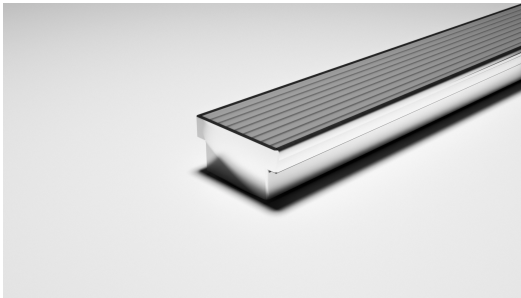


ARCHITECTURAL
GRATES + DRAINS



100AAi50MTL

Linear Drain



The 100AAi50MTL is a linear drainage system providing a convenient solution for level entry and minimum stepdown requirement of 50mm at hinged door thresholds.

With a channel manufactured from sustainably sourced 316 marine grade stainless steel for durability, hygiene and luxurious visual appeal. This drainage is made to specified length with specified outlet position, featuring Stormtech's Good Design Award winning Wave Grate made from anodized aluminium.

Code 100AAi50MTL

Range 100

Grate Style AA

Category Made-to-Length

Channel Material Stainless Steel

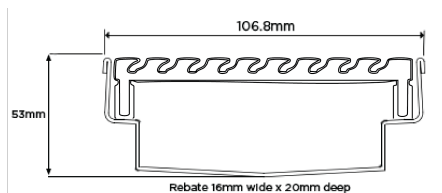
Steel Grade 316

Please be aware that for a pool installation or installation environment close to a surf beach, you may need to have your stainless steel channel electropolished.

Refer to AS3500 for outlet pipe sizes specific to your installation

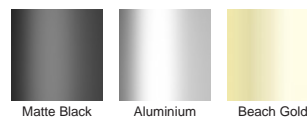
SPECIFICATIONS + DIMENSIONS

Channel Width	107mm
Channel Depth	53mm
Length(s)	As Required
Outlet Size	DN40, DN50, DN65, DN80



Grates longer than 1500mm supplied in sections. Tile Inserts longer than 1200mm supplied in sections. Channels over 3000mm supplied in sections with joiner. +/-2mm tolerance on dimensions.

STORMTECH COLOUR FINISHES



Electroplate finishes subject to natural variation with time and local environment. Factors such as pools/surf beaches may require electropolishing. Contact us for suitability.

PRODUCT APPLICATIONS

- Bathroom Drainage
- Aged / Health Care Drainage
- Balcony Drainage
- Courtyard / Patio Drainage
- Paved Area Drainage
- Threshold Drainage
- Wet Area Drainage

Copyright © Stormtech Pty Ltd. Patent 733361. Drawings not to scale, please use dimensions shown. Downloaded 15/04/2026 (please check for updates)



Visit stormtech.com.au
for tools + inspiration.

Phone **1300 653 403**

Email info@stormtech.com.au