

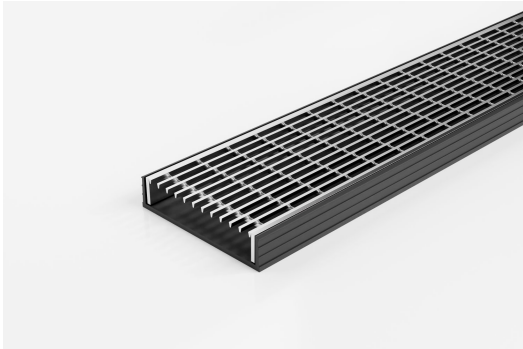


ARCHITECTURAL  
GRATES + DRAINS



# 100TRGBL20

## Linear Drain



The 100TRG20 is a modular drainage system with a stainless steel grate and a Black uPVC channel.

The 100TR is our standard style grate featuring a 3mm/5mm wire gap.

Manufactured from 316 marine grade steel.

Please note that our TR grates have a non finished finish.

Black uPVC channel only suitable for Internal use only

Kits longer than 3000mm available on request.

**Code** 100TRGBL20

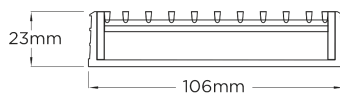
**Range** 100

**Grate Style** TR

**Category** Modular Kits

**Channel Material** uPVC

**Steel Grade** 316

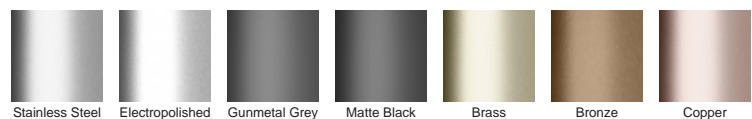


Grates longer than 1500mm supplied in sections. Tile Inserts longer than 1200mm supplied in sections. Channels over 3000mm supplied in sections with joiner. +/-2mm tolerance on dimensions.

### SPECIFICATIONS + DIMENSIONS

<b>Channel Width</b>	106mm
<b>Channel Depth</b>	23mm
<b>Length(s)</b>	900mm 1000mm 1200mm 1500mm 1800mm 2000mm 2200mm 2400mm 2700mm 3000mm
<b>Outlet Size</b>	DN80, DN100

### STORMTECH COLOUR FINISHES



Electroplate finishes subject to natural variation with time and local environment. Factors such as pools/surf beaches may require electropolishing. Contact us for suitability.

### PRODUCT APPLICATIONS

- Bathroom Drainage
- Wet Area Drainage
- Aged / Health Care Drainage
- Hospitality Drainage
- Shower Drainage
- Multi-Residential Drainage
- Special Needs Drainage

Copyright © Stormtech Pty Ltd. Patent 733361. Drawings not to scale, please use dimensions shown. Downloaded 15/04/2026 (please check for updates)



Visit [stormtech.com.au](http://stormtech.com.au)  
for tools + inspiration.

Phone **1300 653 403**

Email [info@stormtech.com.au](mailto:info@stormtech.com.au)